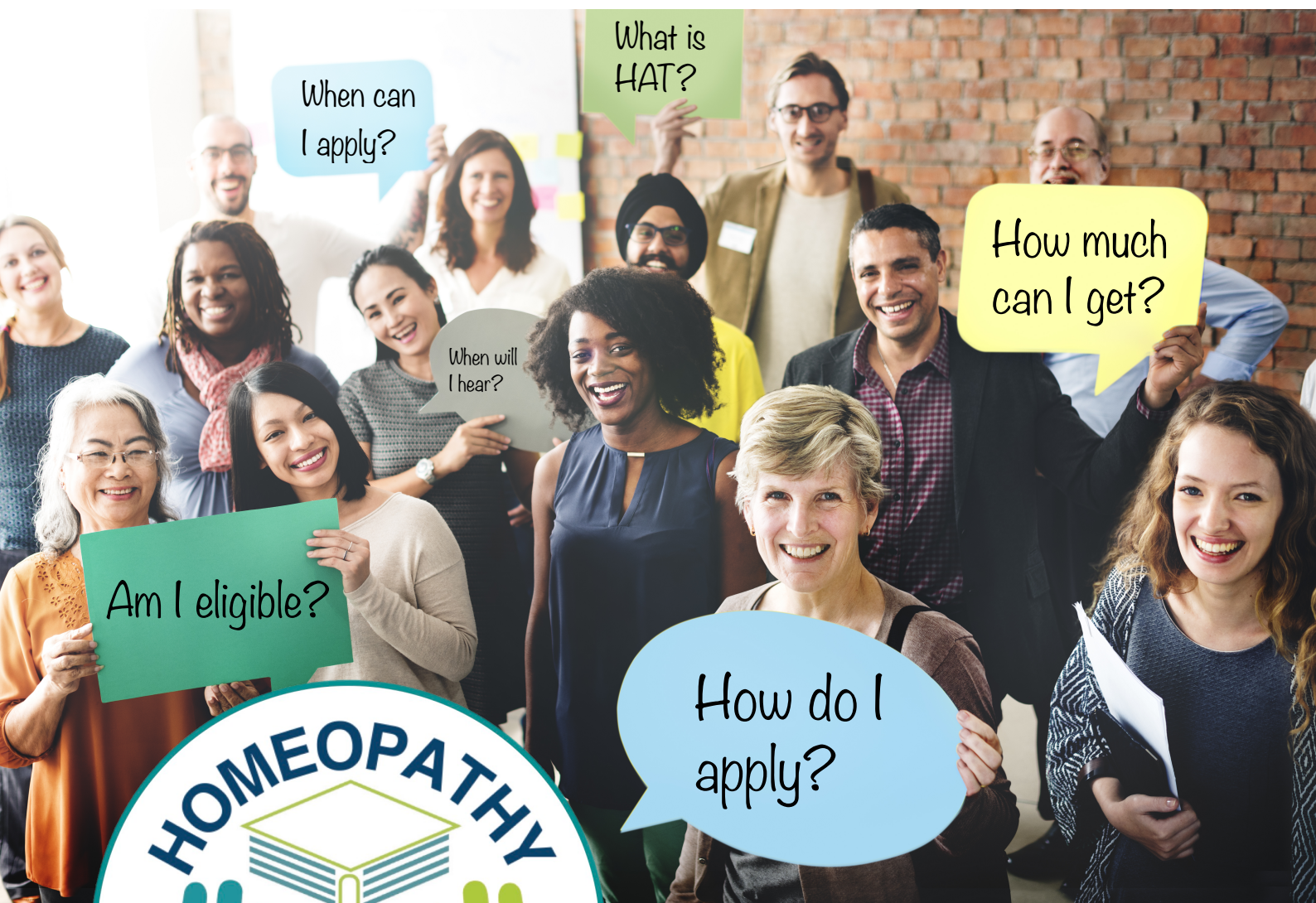


BURSARIES AND GRANTS

Guidance 2025





BURSARY APPLICATIONS GUIDANCE

What is HAT?

HAT is the leading UK membership-based charity for the advancement of the homeopathy profession. Wherever you are on your career journey, HAT offers a range of financial, practical and developmental support.

Our trustees have widespread knowledge and experience of all aspects of homeopathy, and across complementary, traditional and integrated healthcare more widely. We understand where you are, and the challenges you may be facing.

HAT is setting up a variety of free CPD, mentoring and supervision services. Our members are part of a unique professional community committed to supporting you to achieve professional success.

HAT Bursaries

Members have the opportunity to apply for a range of bursaries and grants to assist you during your studies, and has plans to offer support to help you set up as a practising homeopath.

Our bursary funds are designed to help students who intend to become practising homeopaths, and who might genuinely benefit from some financial support during their training.

Each year, HAT offers up to 20 silver standard bursary grants of £500 towards the cost of your tuition fees. In addition, our bursary awards team have the discretion to reward exceptional candidates whose application shows high levels of quality and commitment with an additional £500, bringing the gold exceptional candidate grant to £1000 in total.

HAT also offers book grants of £150 for students who need to help towards the cost of books required for their course syllabus, the process for which can be found separately on the HAT website.

Am I eligible to apply for a bursary?

HAT bursaries are available to students currently in their first year of study onwards (towards second year fees onwards), who attend a course which is a participating member of Homeopathy Training (HT) and has the gold standard IHA accreditation. Our bursary is only available for undergraduate homeopathy training, and should not be used for unpaid fees in your current year of study. Applicants must be a member of HAT.

What do we look for?

Our rigorous and challenging process is designed to stretch your mind in order to ensure that the future generation of homeopaths are not only well-trained, but creative thinking, patient focused and committed to a career as a homeopath.

Our bursary awards team will be looking for you to clearly demonstrate that:

- You have a real passion for homeopathy.
- You intend to practise homeopathy on completion of your studies, and are taking appropriate steps to put a foundation in place for doing so.
- You are committed to your studies and show an aptitude for homeopathy.
- You have a good course attendance record.
- You are genuinely in need, and will benefit from being granted a bursary.

Before applying for a bursary, you will also need to discuss your request with your college principal, as they will be required to provide a reference in support of your application.

You must also be a paid up member of HAT and interested in playing an active role in our community moving forward, and willing to fulfil the terms and conditions of the bursary award which are sent with any successful application.

HAT trustees want to be inspired by your application. Our bursary awards will be granted to applicants who, in the opinion of the bursary awards team and trustees, offer the most convincing and inspiring responses to the questions.

How will my application be assessed?

Your application will be assessed by our bursary awards team, which comprises HAT trustees and occasionally third party individuals where additional independent expertise is required. Should we require further information to assess your application, or where applications are close in terms of their standard, you may be asked to take part in a video call with one or more of our trustees in order to better assess your application. If you are personally known to any member of the assessment panel then that individual will not take part in the assessment of your application.

When can I apply?

Applications for 2025 open on 1st February, and close on 30th April. Applications received outside of this period will not be considered.

When will I hear?

Successful applicants will be informed in the first week of July, with arrangements made for funds to be paid to your respective college or school shortly afterwards. Our Trust Administrator will write to you once a decision has been reached. Unsuccessful applicants will also receive notification from us, but the decision of the assessment panel is final and is not open to appeal. Please feel free to contact us to obtain feedback if you wish.

How do I apply?

Complete all sections of the application form, answering the following questions.

Why are you passionate about homeopathy?

(Tell us what inspired you to pursue a career in homeopathy, and how your personal journey has influenced this decision? Use this opportunity to give us some background information on your motivation and aspirations.)

How would you explain homeopathy to someone who has no knowledge of it?

(Imagine that you have a new patient sitting in front of you and you are having a conversation with them. Be natural. Use simple, accurate and easy to understand language. Do not cut and paste information from online sources.)

How do you intend to become a professional homeopathic practitioner after your graduation?

(Outline the preparations you are making, or the preparations you intend to make, to build a successful business as a homeopath? Demonstrate practical initiatives which you believe would lay the foundations for the best chance of success.)

How do you think you can contribute to the homeopathic community upon completion of your studies?

(Think about ways in which you could work with other homeopathic colleagues and organisations. Are there things which you could do when qualified to help raise awareness, build relationships and support the development of homeopathy?)

Why do you need a bursary from HAT?

(Detail the financial challenges and circumstances you are facing which are hindering your ability to pursue a homeopathic education, and explain how receiving this bursary would alleviate those challenges. How would a bursary help you moving forward?)

Your answers should be a maximum of 500 words per question. If you prefer, you can apply by producing a video, which encapsulates your responses. Your video doesn't have to be professional, just an honest portrayal of you. Any video should not exceed 2 minutes in length.

Please ensure that you fully complete the application form with all required information such as your name, email address and phone number. Remember also to get your college principal to fill in their part, as unendorsed bursary applications will not be considered.

What is expected of me if I am successful?

If you are fortunate enough to be awarded a HAT bursary we request that you do the following to support us and our ongoing work.

- Write a short statement saying what the bursary means to you and supply a photo. This may be used in future publicity material to encourage other students to apply for a bursary, and to inspire the next generation of homeopaths.
- Write a quarterly diary (around 300 words per entry) during the year of your bursary giving an insight into your studies, what you've learnt, and the challenges you've faced, in order to share your thoughts about what training to be a homeopath involves. This may be used and published to help inform and inspire others who are thinking about training to be a homeopath.
- Engage with HAT and our community, and play your part in strengthening the profession.

Repayments

You are not expected to repay the awarded funding. It is an award not a loan.

HAT will only consider recouping bursary funds if you do not meet the agreed conditions and standards set by your course provider or our terms and conditions (above) that we also send to you in making the award. We may request from you the reimbursement of all or part of the monies paid towards your tuition fees if you cancel your membership of HAT during the year of the award or if you fail to fulfil the mandatory course requirements. If you decide to leave your course during the first term following your bursary award then your course provider will be expected to repay the full amount of the bursary award and may seek to reclaim it from yourself.

Further information

If you are unsure about any aspect of the process then please contact HAT and we will endeavour to provide additional information and guidance.